

Input user *IDEA*

Initial-round manual prompt

Initial-round *Idea2Img* prompt

Iterative self-refined *Idea2Img* prompt

(a)

photo of a dog looks like the one in the given image running on the beach

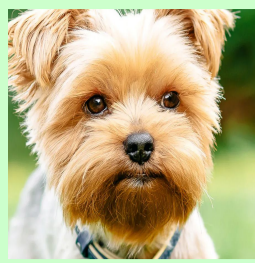


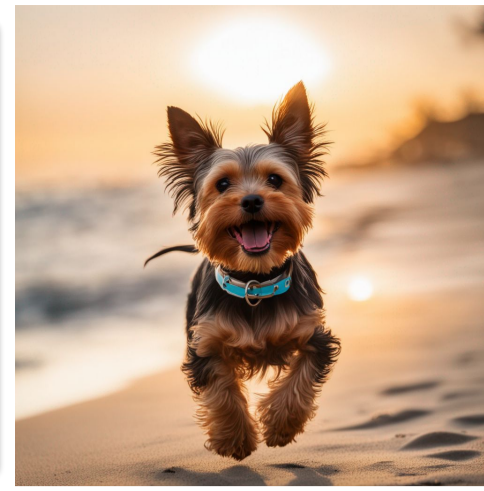
photo of a dog looks like the one in the given image running on the beach that is a fluffy golden dog



A small dog with a fluffy coat running on the beach, with the ocean in the background.

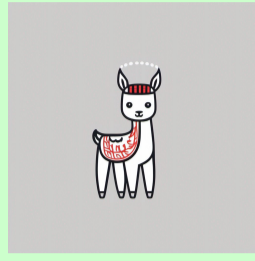


A playful Yorkshire Terrier with a collar running on the beach, with the sun setting over the ocean in the background.



(b)

A watercolor cartoon logo based on the design in the given image



A watercolor cartoon logo based on the design in the given image that is a llama



A logo design of a llama with a red scarf and beanie, in a watercolor cartoon style, with a soft and pastel color palette.

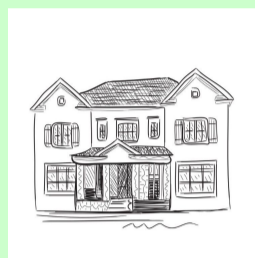


A logo design of a llama standing on all fours, with a red scarf and beanie, in a watercolor cartoon style, with a soft and pastel color palette, similar to the design in the given image.



(c)

a watercolor painting of the same house with the same number of windows and the frontal view as the one in the sketch



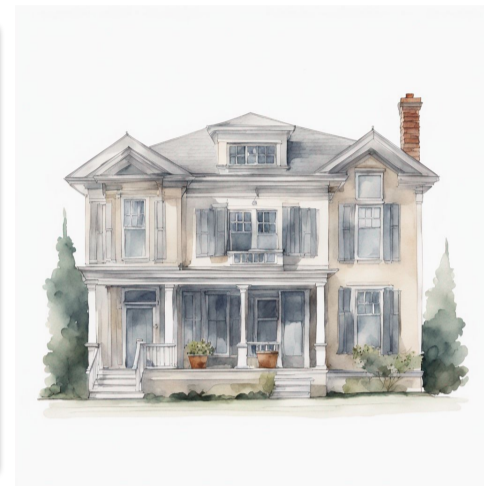
a watercolor painting of the same house with the same number of windows and the frontal view as the one in the sketch that is a two-level house with four large windows and three small windows in the center



A watercolor rendition of a house with a frontal view and six windows, with a focus on the architectural details



A watercolor illustration of a house with a porch and six windows, with an emphasis on the symmetry and style of the house in the sketch.



(d)

portrait of Bill Gates with style different from this one in the image



portrait of Bill Gates with style different from this one in the image that is impressionist



A portrait of Bill Gates in a cartoon style, with bright colors and a cheerful mood.

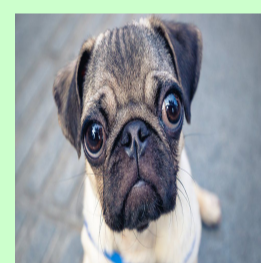


A portrait of Bill Gates in a cartoon style, with bright colors and a cheerful mood, with a light-colored background to make the portrait stand out.



(e)

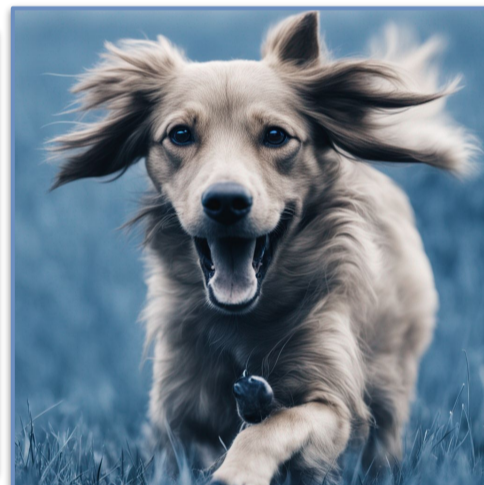
a dog looks like this one in the image running on the grass, but in blue color



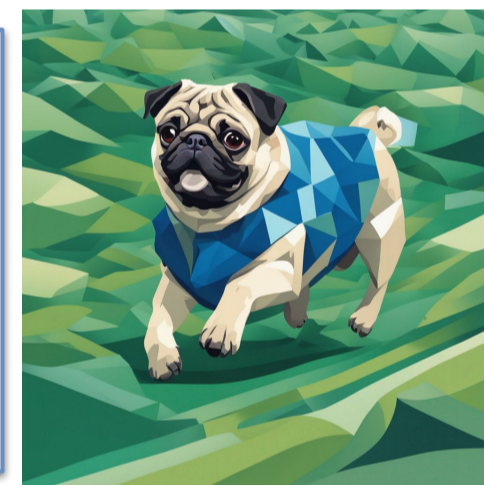
, with the image style similar to this one in the image



a dog looks like this one in the image running on the grass, but in blue color. The dog is pug dog, with the image style similar to this one in the image that contains blocks



A pug dog with a blue coat running on a field of green grass, with a style reminiscent of cubism.

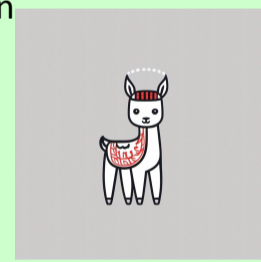


A pug dog with a blue coat running on a field of green grass, with its legs stretched out and its tail wagging as it runs, in a style reminiscent of cubism.



(f)

Cartoon drawing with a design that naturally blends the two given images as a new minimalist drawing. Please provide a textual description of the design before generating. The first image is



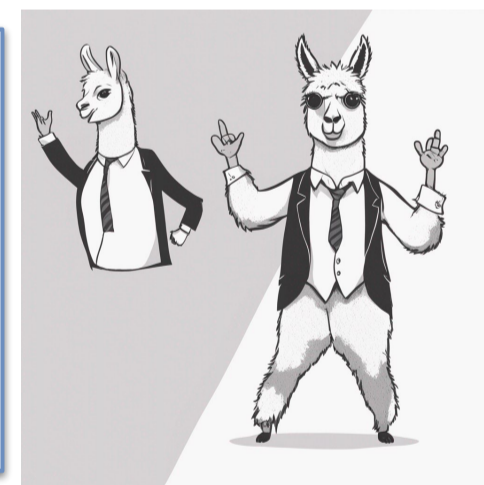
, and the second image is



Cartoon drawing with a design that naturally blends the two given images as a new minimalist drawing. Please provide a textual description of the design before generating. The first image is a llama logo, and the second image is a person in suit



A cartoon drawing of a llama wearing a suit and waving, blending the minimalist style of the first image with the professional attire of the second image.



A whimsical cartoon of a llama with a human body dressed in a stylish suit, waving its hand, combining the charm of a cute llama drawing and the elegance of a man in a suit, in a minimalist style, with a muted color palette.



(g)

photo with a design that composites the two given objects into the new photo. The placement of the objects does not adhere to the laws of physics. Please provide a textual description of the objects and design before generating. The first object is



, and the second object is



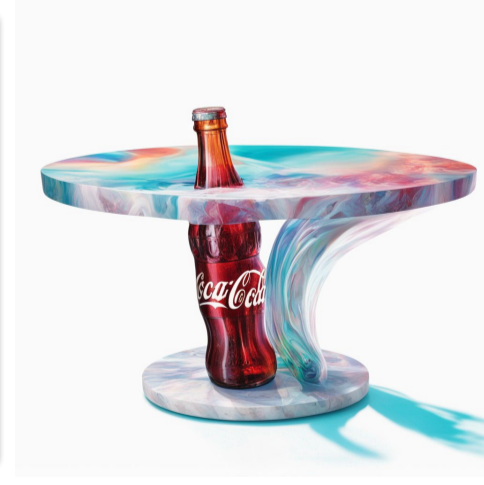
photo with a design that composites the two given objects into the new photo. The placement of the objects does not adhere to the laws of physics. Please provide a textual description of the objects and design before generating. The first object is a marble table, and the second object is a coke



A surreal scene of a Coca-Cola bottle and a marble table merging into one, in an abstract space with distorted dimensions, bright colors, and dynamic lighting.



An imaginative scene where a Coca-Cola bottle is floating and twisting above a marble table, defying gravity, with the bottle and table merging into each other in places, surrounded by a kaleidoscope of colors and ethereal lighting that gives a dreamlike atmosphere.



(h)

image that depicts what will happen next based on the story in the two given frames. Please provide a textual description of the image before generating. The first frame in the story is



, and the second frame in the story is

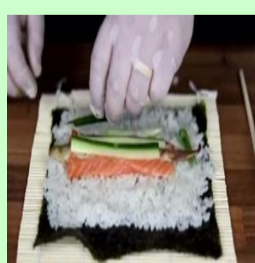
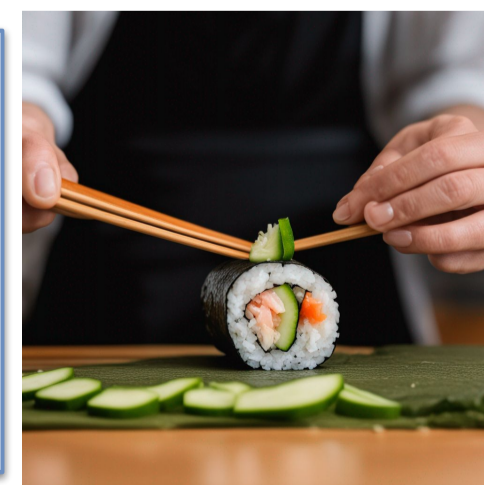


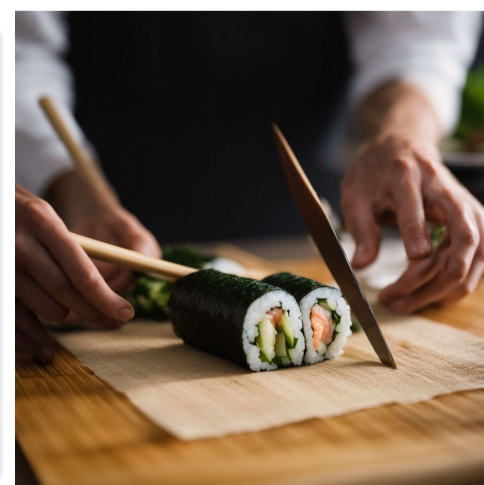
image that depicts what will happen next based on the story in the two given frames. Please provide a textual description of the image before generating. The first frame in the story is rice on sushi roll, and the second frame in the story is ingredients on rice



A close-up of a sushi roll in the making, with a pile of rice on a seaweed sheet and salmon and cucumber being added, next step is rolling and cutting the sushi.

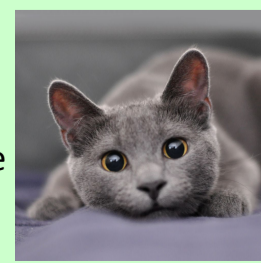


A close-up of a sushi roll in the making, with a pile of rice on a seaweed sheet and salmon and cucumber being added, next step is rolling and cutting the sushi, with a bamboo mat and knife nearby, in a kitchen setting.



(i)

Two cats running on the beach, the right one looks like



and the left one looks like



Two cats running on the beach, the right one looks like a gray cat and the left one looks like an orange cat



A gray cat and an orange cat running on the beach, with the gray cat on the right and the orange cat on the left.



A gray cat with its head down and eyes looking forward and an orange cat with its eyes closed, both running on a beach with the gray cat on the right and the orange cat on the left, with the ocean in the background.

